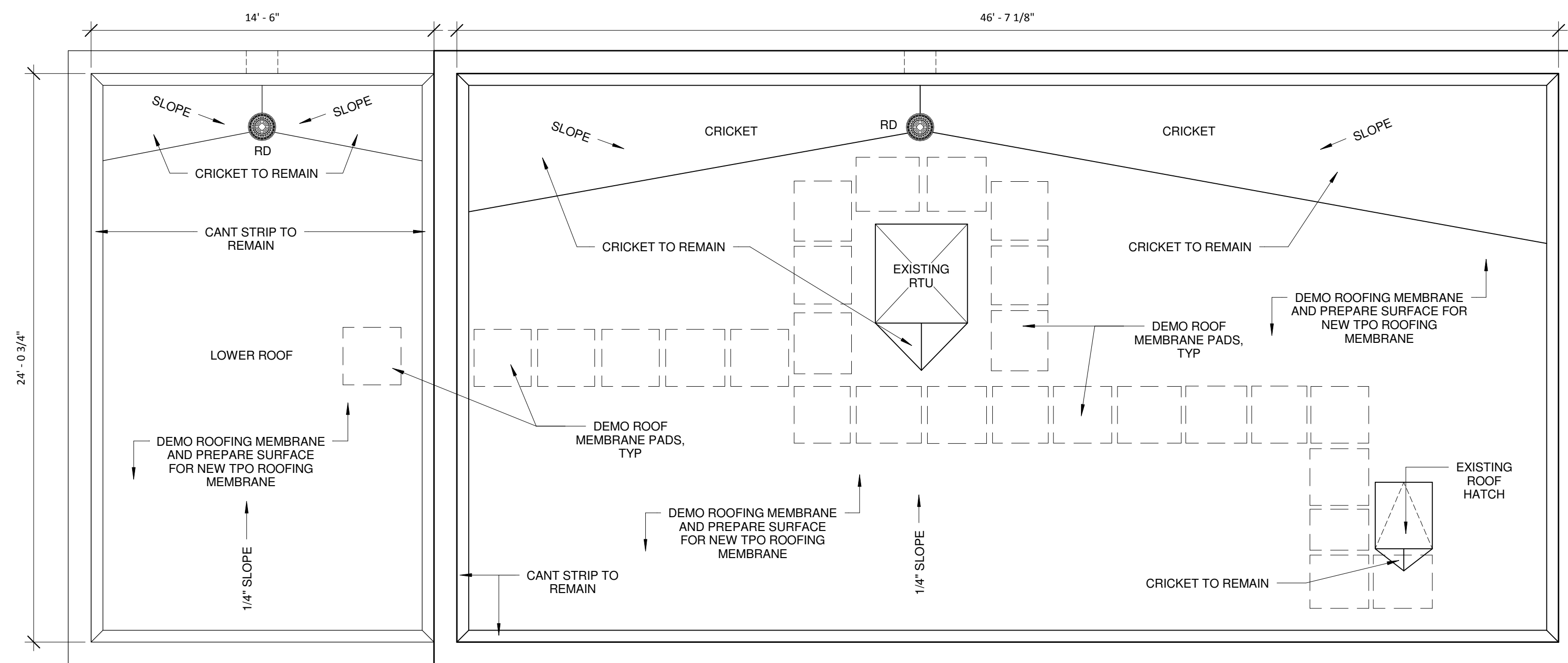


# MAINTENANCE BUILDING RE-ROOF

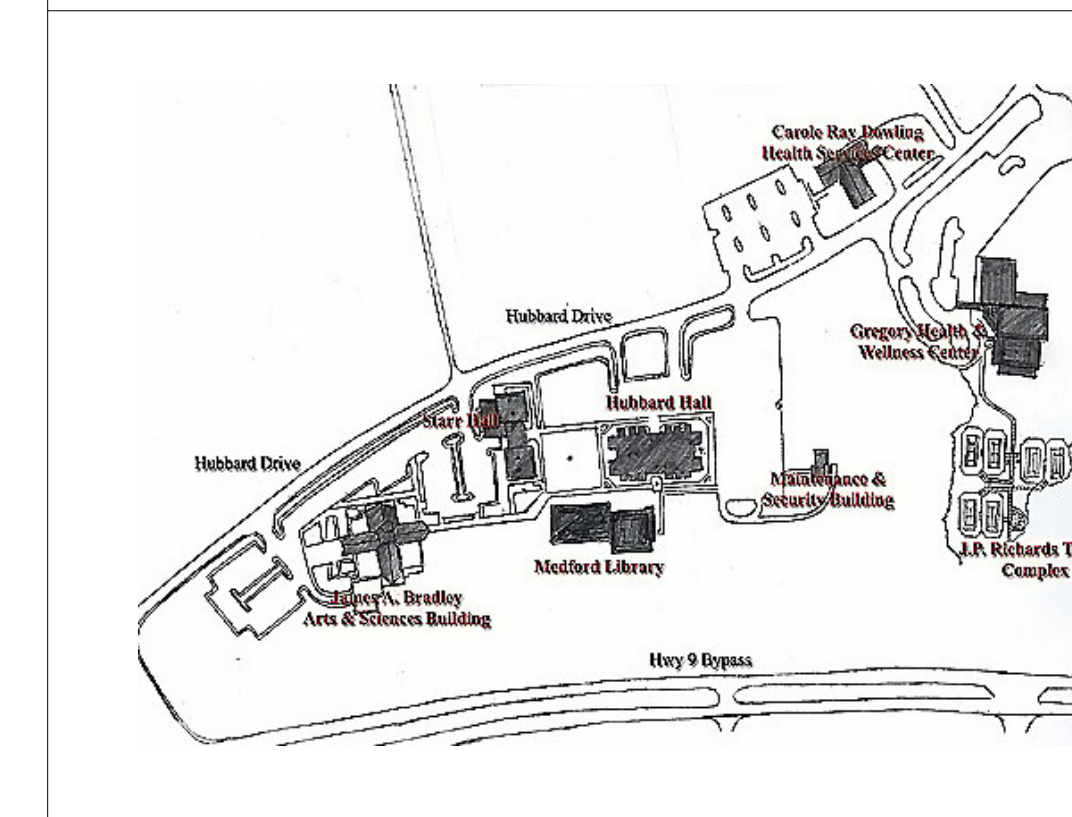
for



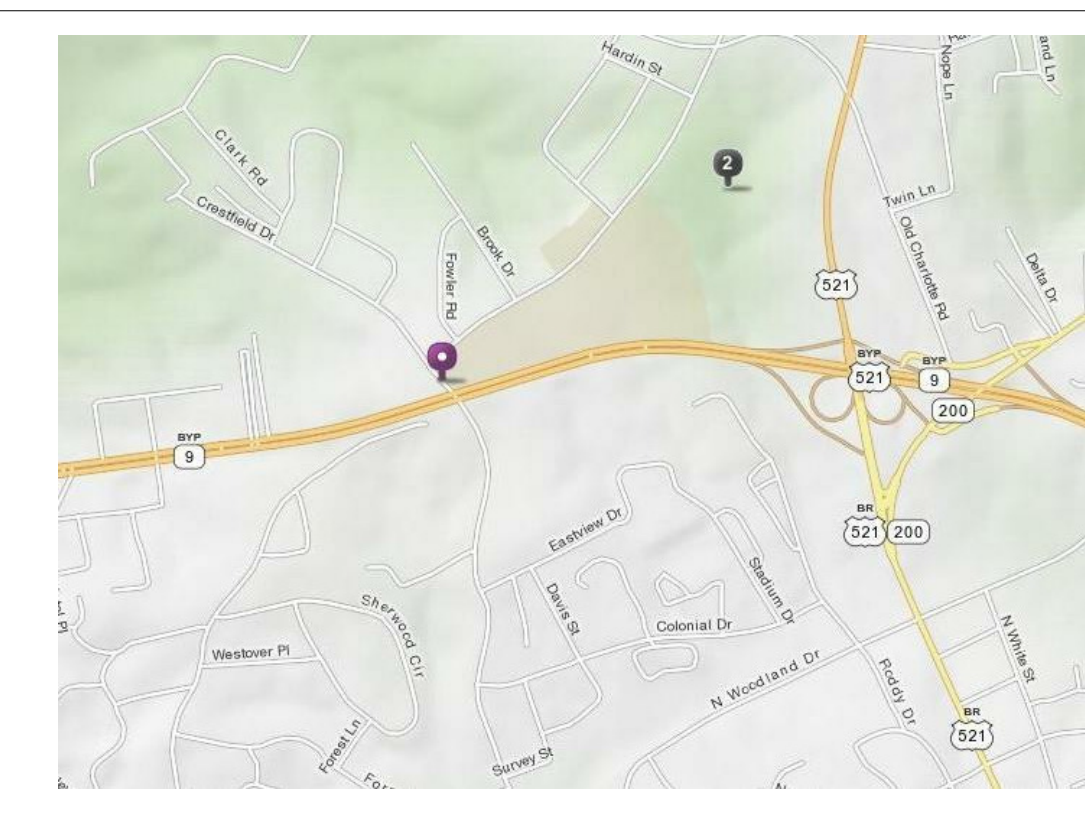
UNIVERSITY OF  
**SOUTH CAROLINA**  
LANCASTER



LOCATION MAP

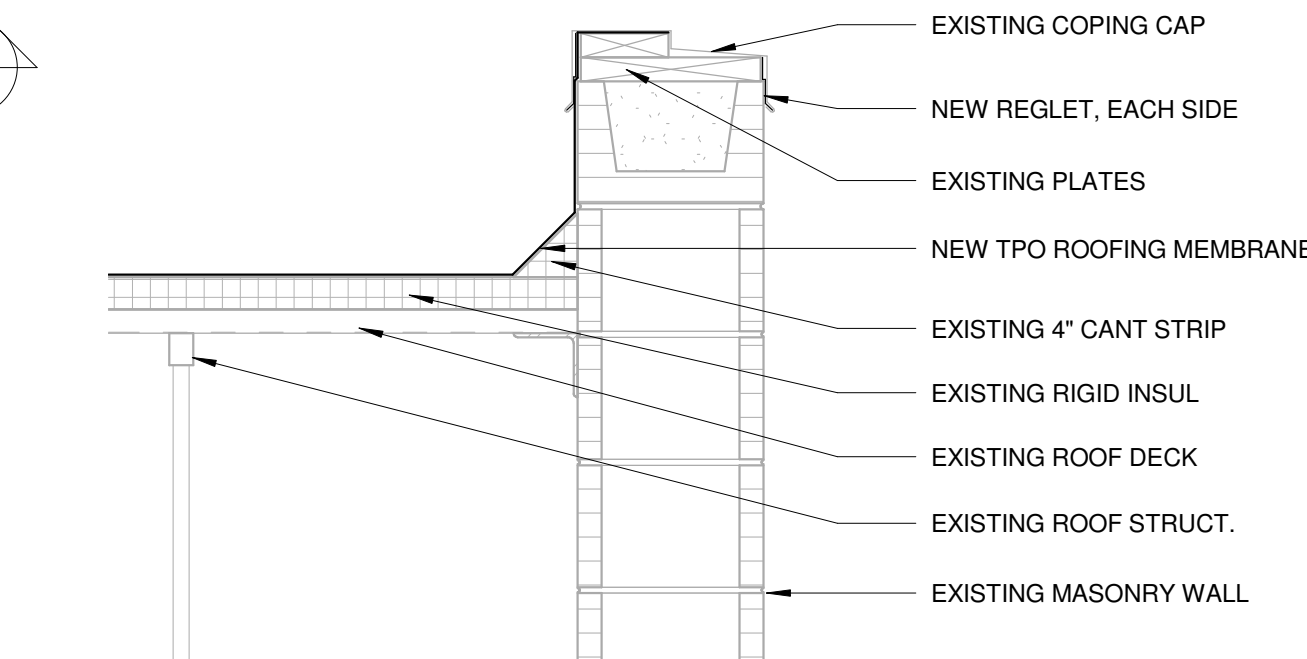
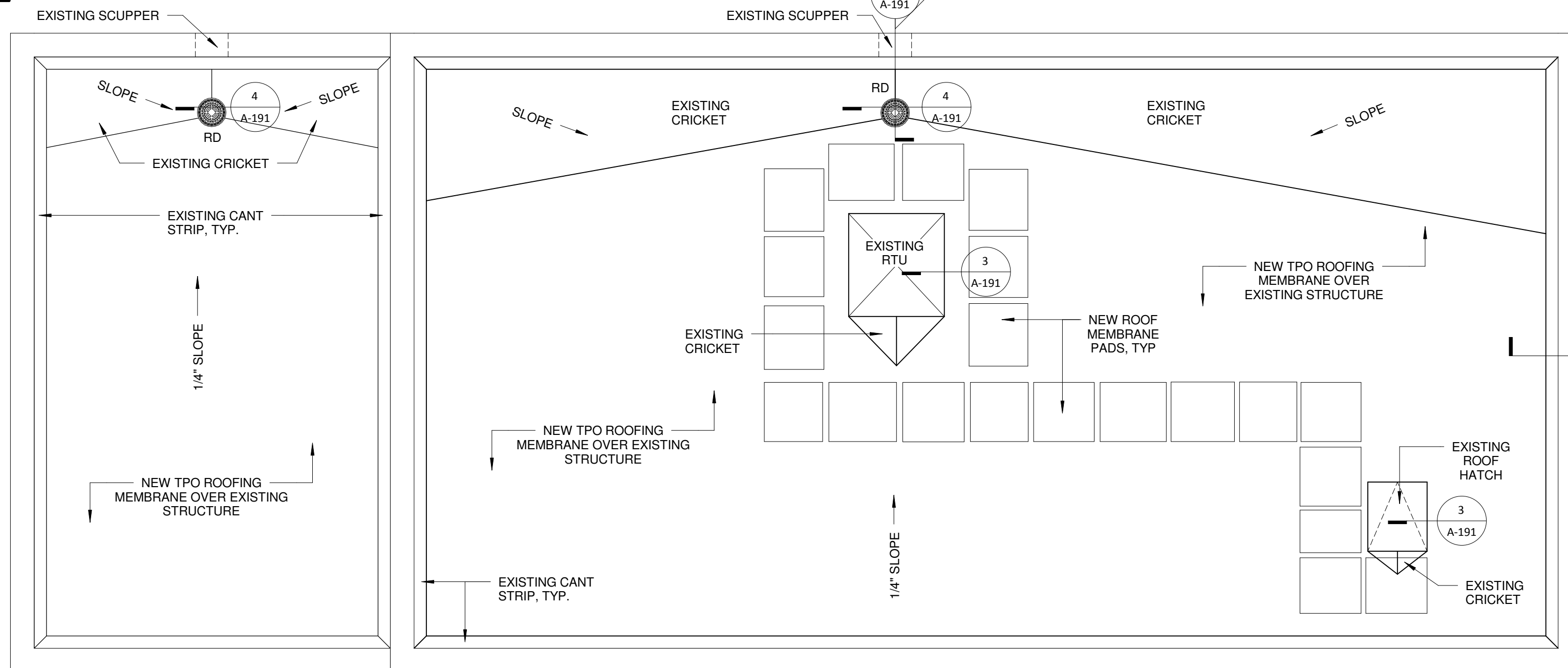


VICINITY MAP



## 1 DEMOLITION ROOF PLAN

SCALE: 1/4" = 1'-0"

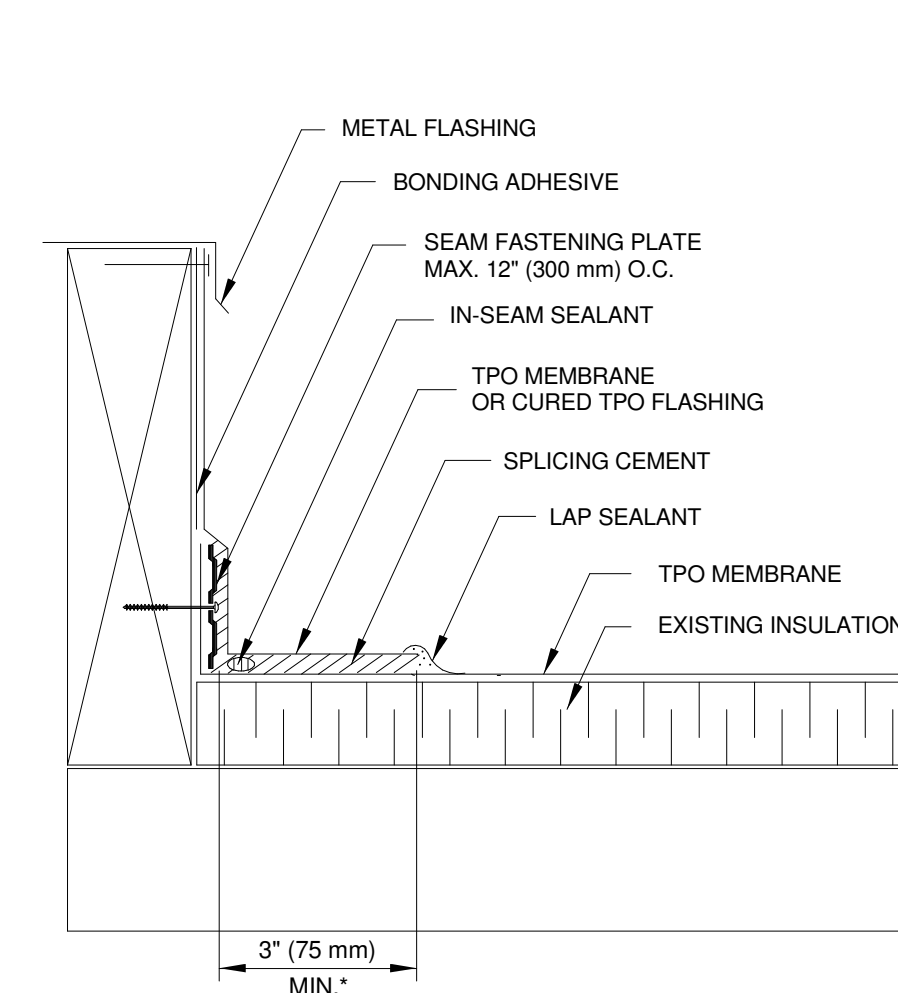


## 6 TYP TOP OF WALL DETAIL

SCALE: 1" = 1'-0"

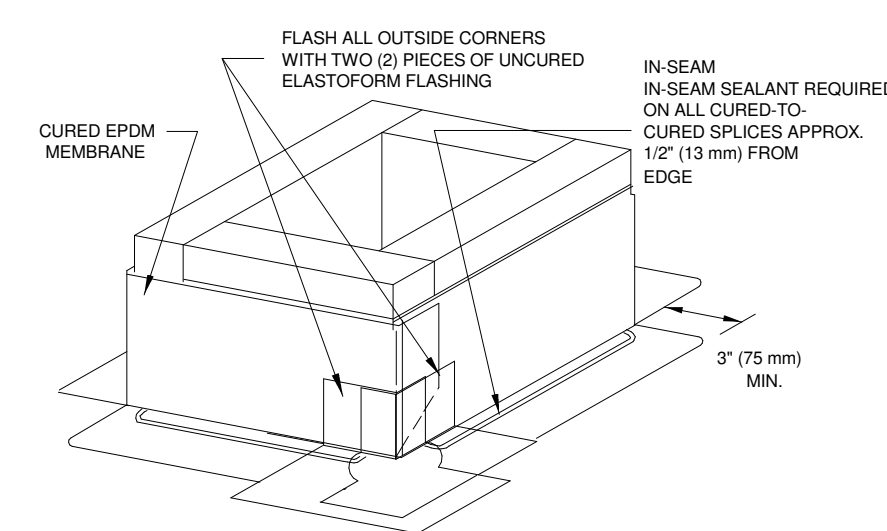
## 2 NEW ROOF PLAN

SCALE: 1/4" = 1'-0"



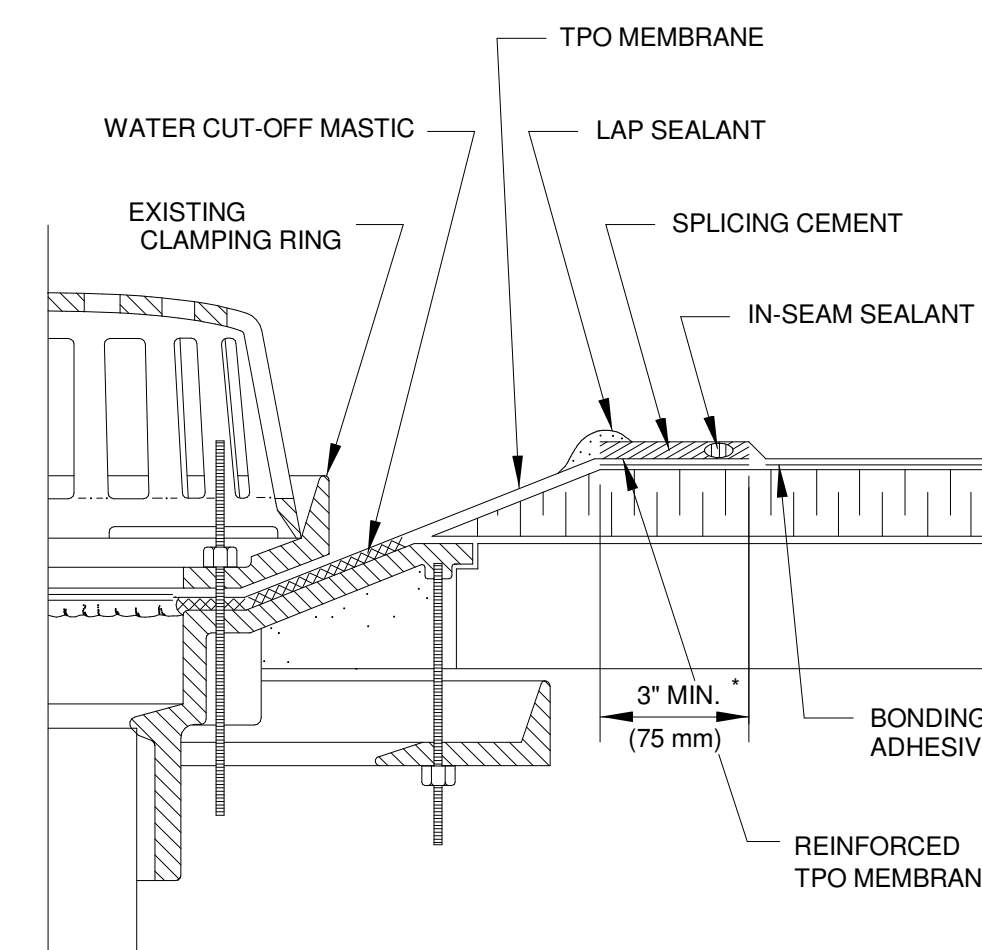
## 3 ROOF HATCH CURB DETAIL

SCALE: NOT TO SCALE



NOTES:

1. FASTEN MEMBRANE FLASHING 12" (300 mm) ON CENTER. IF FASTENER PENETRATES METAL COUNTERFLASHING, USE TPO WASHER. APPLY WATER CUT-OFF MASTIC OR CAULK FASTENER HEAD.
2. IF VERTICAL SPLICE IS NOT LOCATED AT CORNER, 6" (150 mm) WIDE UNCURED ELASTOFORM FLASHING OR PRESSURE-SENSITIVE FLASHING MUST BE CENTERED OVER FIELD SPLICE AT ANGLE CHANGE.
3. FASTENING PLATES MAY BE INSTALLED HORIZONTALLY.

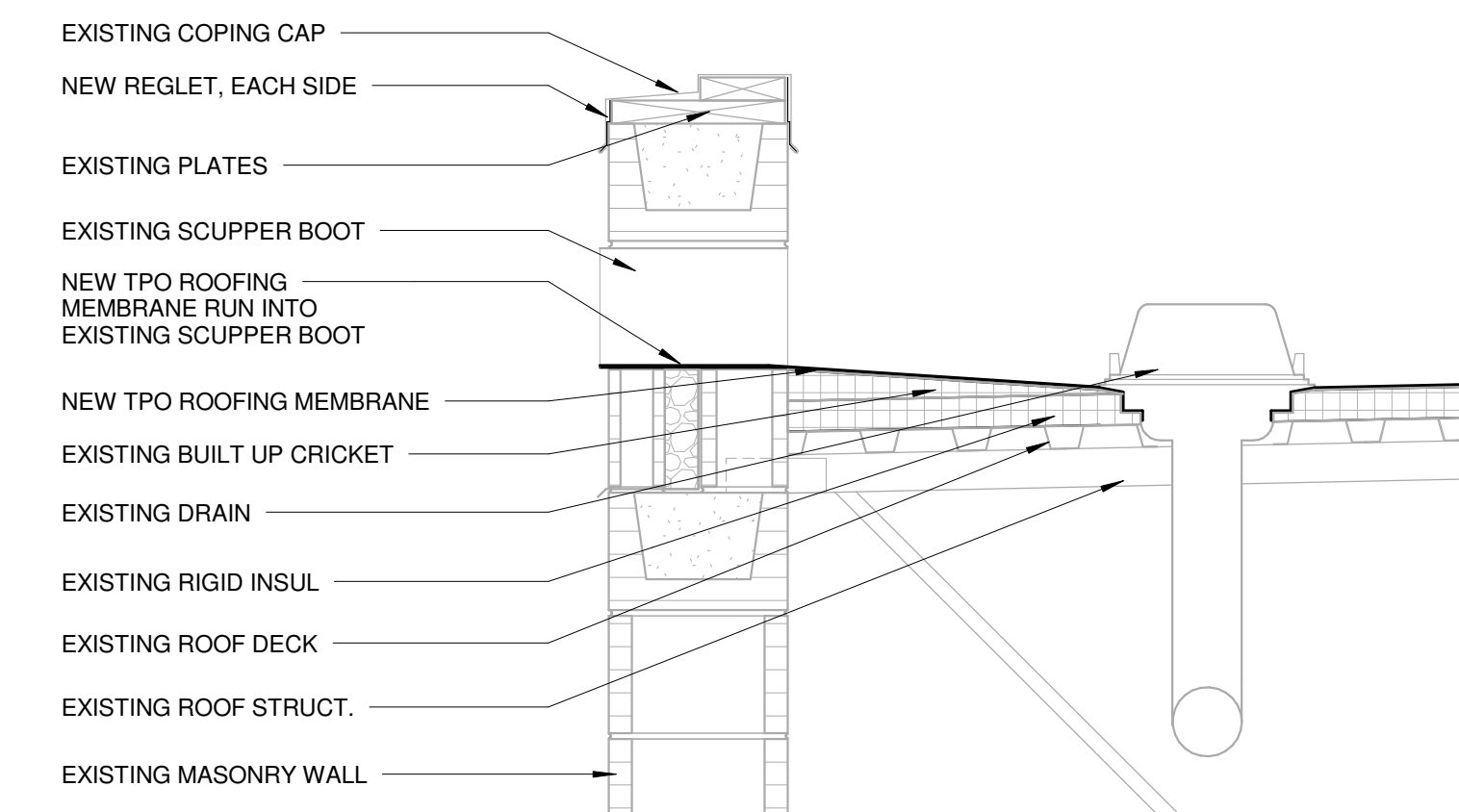


## 4 ROOF DRAIN DETAIL

SCALE: NOT TO SCALE

NOTES:

1. REMOVE ALL LEAD AND OTHER FLASHING.
2. ALL BOLTS AND CLAMPS MUST BE IN PLACE TO PROVIDE CONSTANT COMPRESSION ON WATER CUT-OFF MASTIC.
3. CUT THE MEMBRANE SO IT EXTENDS A MINIMUM OF 1/2" (13 mm) FROM THE ATTACHMENT POINTS OF THE DRAIN CLAMPING RING.
4. HOLE ON MEMBRANE MUST EXCEED SIZE OF DRAIN PIPE.
5. INSULATION TAPER SHALL NOT BE STEEPER THAN 6" (150 mm) (VERTICAL) IN 12" (300 mm) (HORIZONTAL).
6. ROOF DRAIN SIZE AND NUMBER OF DRAINS SHALL BE IN ACCORDANCE WITH LOCAL CODES.
7. FOR THE APPLICATION OF ROOF DRAINS IN CONJUNCTION WITH NON-REINFORCED EPDM MEMBRANE ROOFING ASSEMBLIES, REFER TO U-6 DETAILS.



## 5 SCUPPER AND DRAIN DETAIL

SCALE: 1" = 1'-0"

ISSUE DATE

ISSUE FOR BID 02/27/13

USC LANCASTER - MAINTENANCE  
BUILDING RE-ROOF

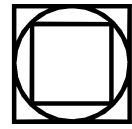
476 Hubbard Dr.

Lancaster, SC 29720

GMC # AGRE120049

ISSUE FOR BID

GOODWYN MILLS CAWOOD



101 East Washington Street, Suite 320 | Greenville, SC 29601  
Tel 864.527.0460 | GMCNETWORK.COM

drawn by: IVAS  
checked by: MEK

DEMO AND NEW ROOF  
PLAN AND DETAILS

A-191  
sheet of